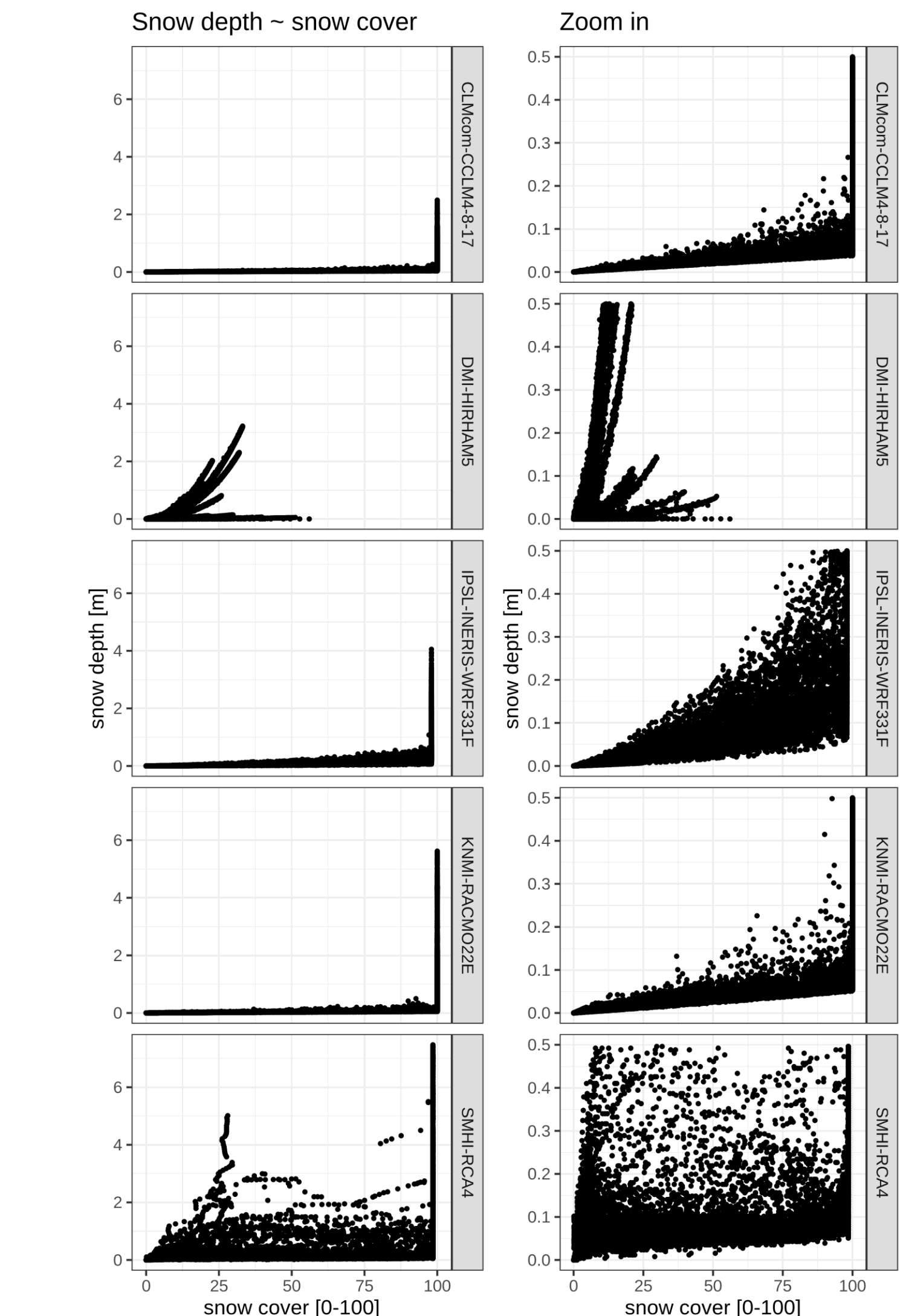
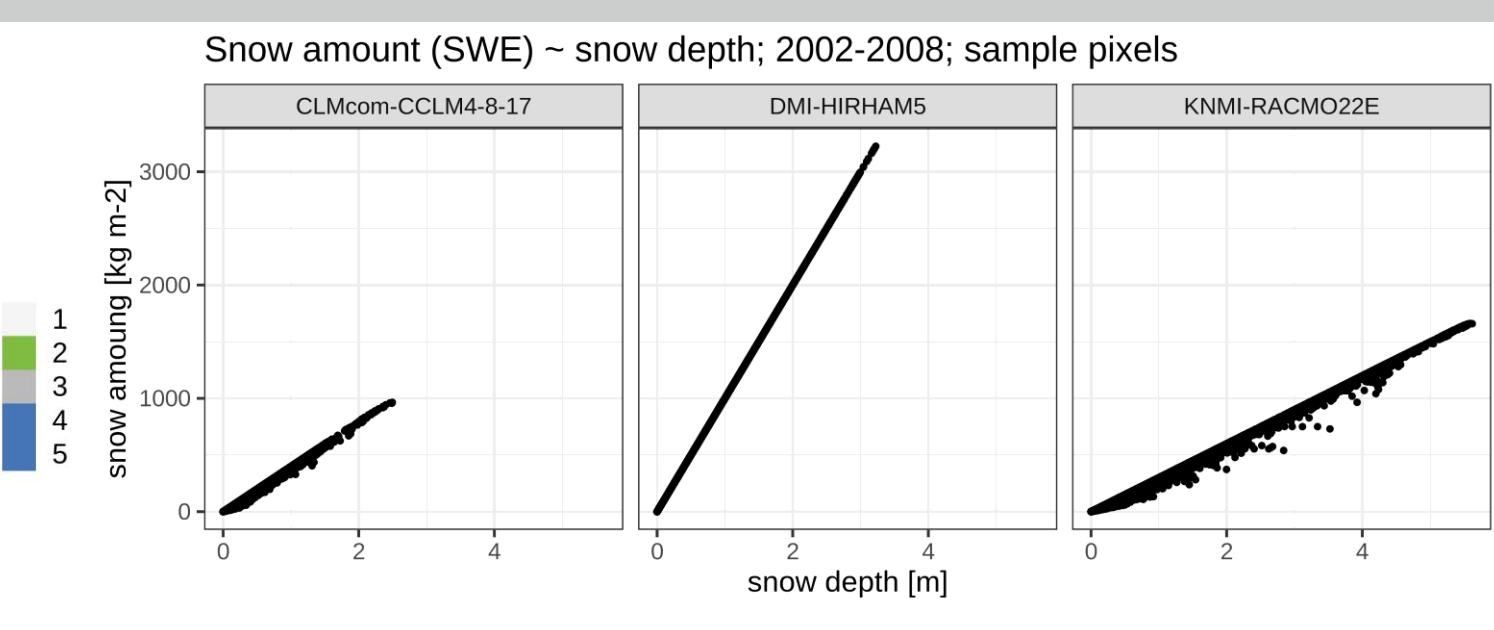
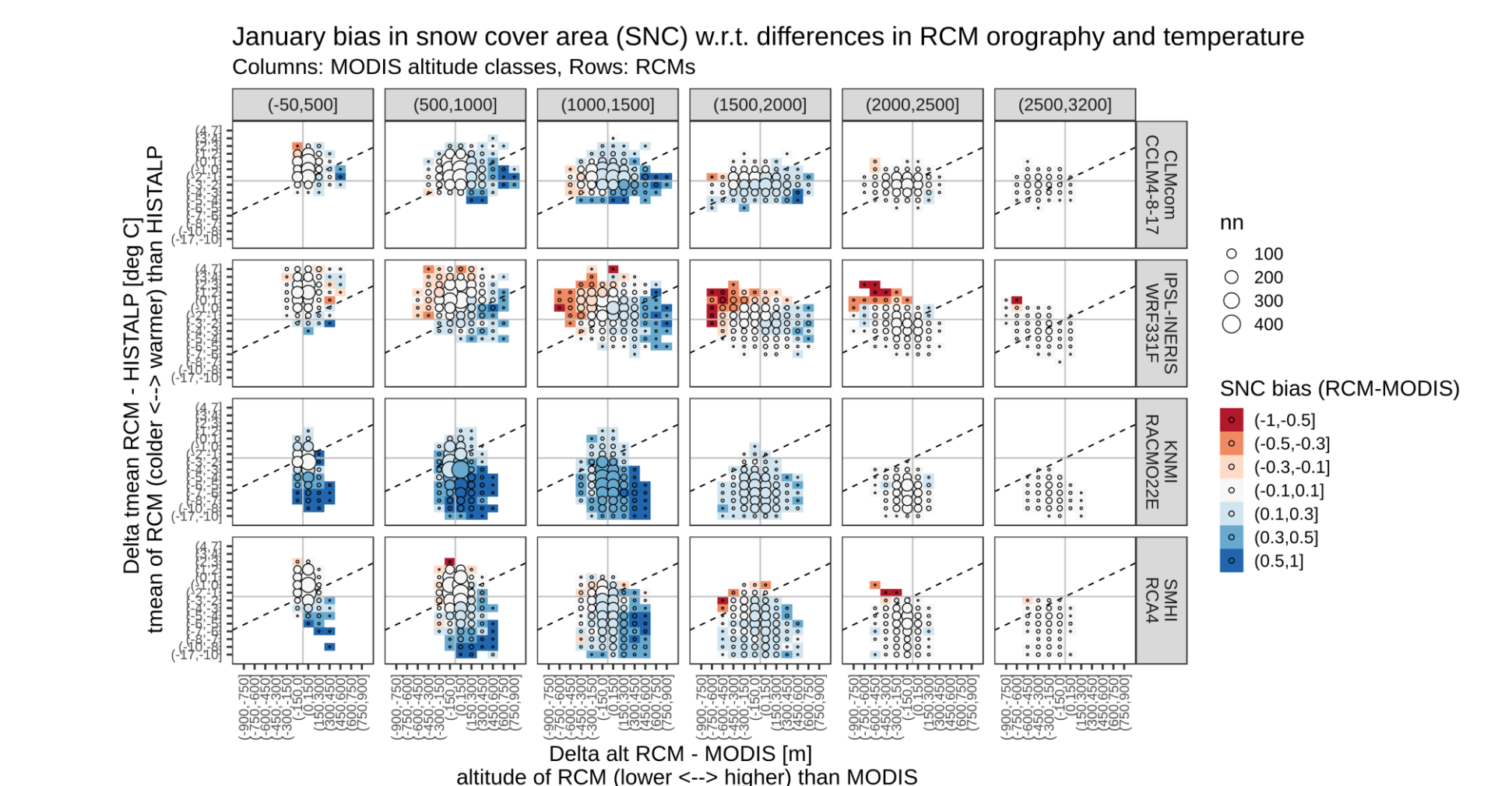
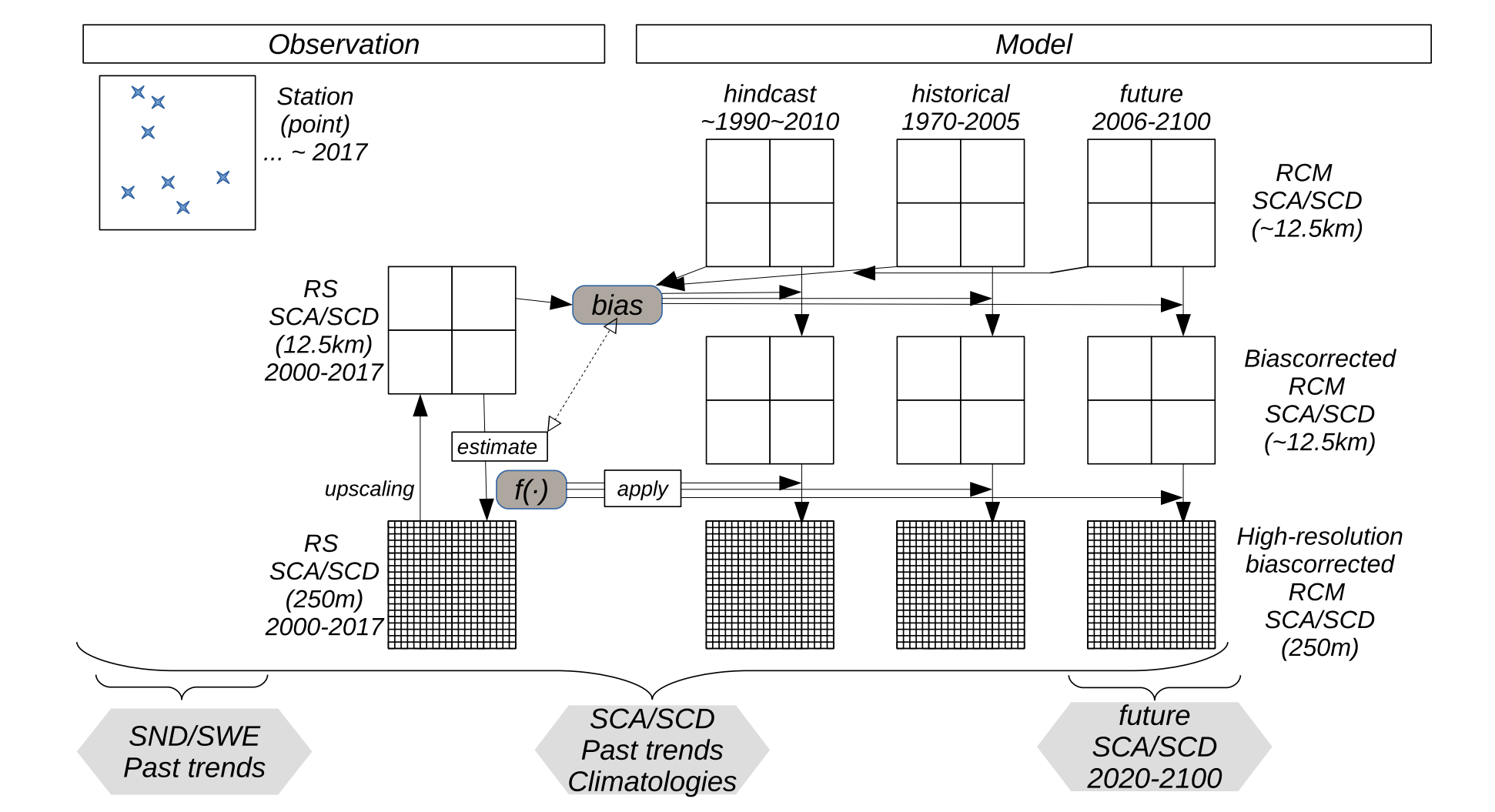
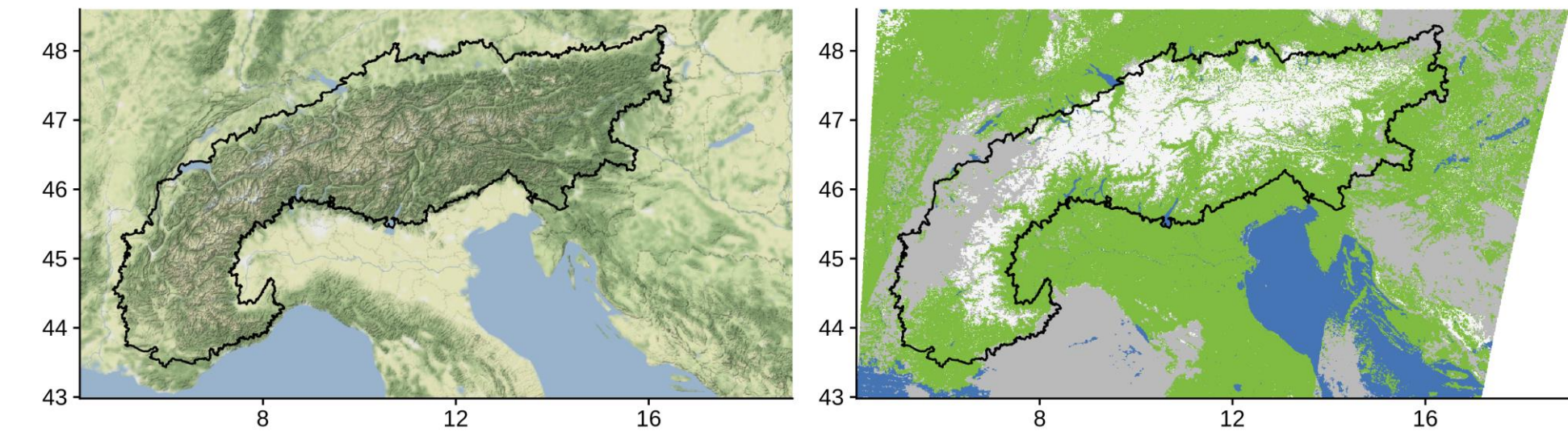
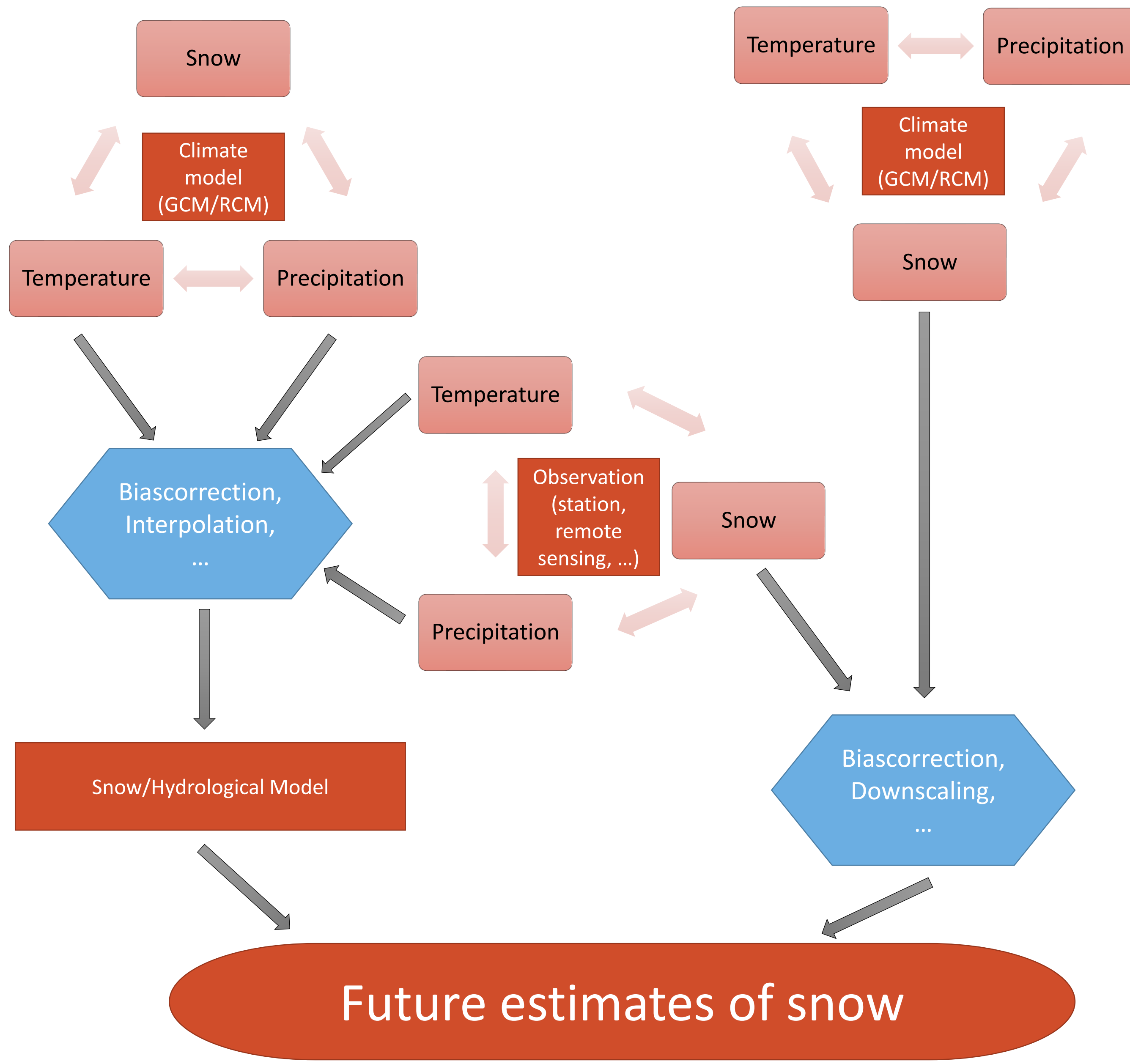




# Future snow cover in the alps: Using MODIS satellite observations to bias correct snow cover from the EURO-CORDEX regional climate model ensemble

M. Matiu, M. Petitta, C. Notarnicola, V. Premier, M. Zebisch  
Eurac Research, Bolzano, Italy



**Traditional approach**  
Use a dedicated snow model, forced by projections from climate models

- + accurate physics
- + high spatial resolution possible
- computationally intensive for large areas
- decoupling of climate and hydrology

**Alternative**  
Use snow from climate models directly

- ? (only a) by-product
- low (GCM: ~100s km) to moderate (RCM: ~10s km) spatial resolution
- + large areas covered
- + climate-hydrology feedbacks

